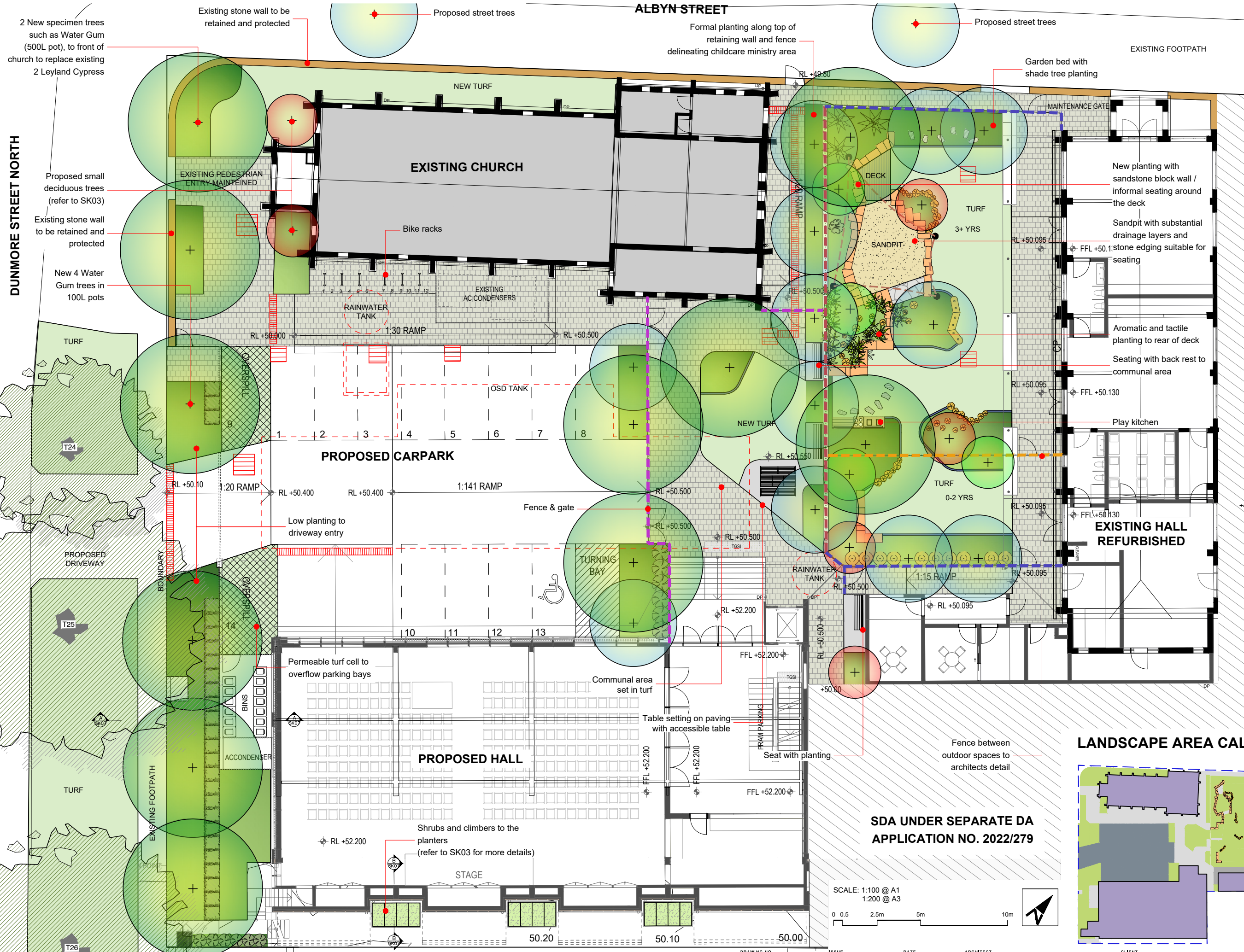


LOCATION PLAN



UMBACO LANDSCAPE ARCHITECTS
LANDSCAPE CONCEPT
Christ Church Anglican, Bexley
FOR
SUSTAINABLE DESIGN GROUP LTD

Dwg	NAME	ISSUE
SK0X	COVERSHEET	K
SK01	LANDSCAPE CONCEPT PLAN	K
SK02	TREE PROTECTION PLAN	K
SK03	CONCEPT PLANTING PLAN	K
SK04	MINISTRY LANDSCAPE TREATMENTS	K
SK05	CHILDCARE LANDSCAPE TREATMENTS	K
SK06	PLANTING MATERIAL	K
SK07	TYPICAL LANDSCAPE SECTIONS AND DETAILS	K



LEGEND

EXISTING TREES TO BE RETAINED AND PROTECTED (REFER TO SK02 FOR MORE DETAILS)

PROPOSED LARGE EVERGREEN TREES (REFER TO SK03 FOR MORE DETAILS)

PROPOSED MEDIUM / SMALL EVERGREEN TREES (REFER TO SK03 FOR MORE DETAILS)

PROPOSED SMALL DECIDUOUS TREES (REFER TO SK03 FOR MORE DETAILS)

NEW PLANTING

TURF

TURF CELL

NEW CRAZY PAVING

TIMBER DECKING

PLAY SAND

CONCRETE PAVING

UNIT PAVER

GARDEN EDGE

SANDSTONE LOGS
1000 X 500 X 500 mm

SANDSTONE BALLAST
350 X 350 - 450 X 450 mm

TIMBER LOGS
150-400 mm DIA

PLAY KITCHEN

TABLE PICNIC SETTING

SEAT WITH BACK REST

FENCE - 1400mm HIGH ON TOP OF 400mm RETAINING WALL

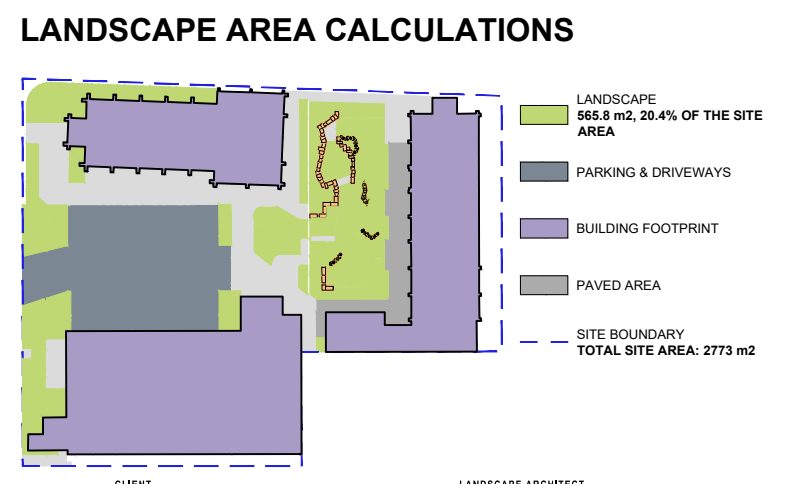
FENCE - 1800mm HIGH

FENCE - 1200mm HIGH

CAR PARK FENCE

SHADE STRUCTURE OVER SANDPIT

PITS & TRENCH GRATES TO ENG. DETAILS

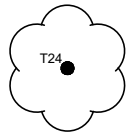


ALBYN STREET

SCALE 1:150@A1
0 1m 2.5m 5m 10m



LEGEND



EXISTING TREES TO BE
RETAINED AND
PROTECTED



EXISTING TREE
TO BE REMOVED



TPZ TREE PROTECTION ZONE



SRZ STRUCTURAL ROOT ZONE

REMOVAL OF TREES NO. 5,
6, 7 APPROVED UNDER
TREE PERMIT
APPLICATION TP 2022/126
SUBJECT TO 9
REPLACEMENT TREES AS
FOLLOWS:

- 3 x *Callistemon*
viminalis
- 3 x *Angophora*
floribunda
- 2 x *Banksia integrifolia*
- 1 x *Corymbia eximia*

SCHEDULE OF EXISTING TREES

Tree No	Botanical name/Common name	Recommendation
T1	<i>Olea europea ssp. Cuspidata</i> (African Olive)	To be removed
T2	<i>Howea belmoreana</i> (Curly Palm)	To be removed
T3	<i>Howea belmoreana</i> (Curly Palm)	To be removed
T4	<i>Melaleuca salicina</i> (Willow Bottlebrush)	To be removed
T5	<i>Callistemon viminalis</i> (Weeping Bottle Brush)	To be removed
T6	<i>Callistemon citrinus</i> (Crimson Bottlebrush)	To be removed
T7	<i>Jacaranda mimosifolia</i> (Jacaranda)	To be removed
T9	<i>Feijoa sellowiana</i> (Feijoa)	To be removed
T10	<i>Viburnum sp</i> (Viburnum)	To be removed
T11	<i>Syzygium luehmannii</i> (Lilly Pilly)	To be removed
T12	<i>Callistemon citrinus</i> (Crimson Bottlebrush)	To be removed
T13	<i>Quercus robur</i> (English Oak)	To be removed
T14	<i>Eriobotrya japonica</i> (Loquat Tree)	To be removed
T15	<i>Cupressocyparis leylandii</i> (Leyland Cypress)	To be removed
T16	<i>Cupressocyparis leylandii</i> (Leyland Cypress)	To be removed
T17	<i>Callistemon viminalis</i> (Weeping Bottle Brush)	To be removed
T18	<i>Callistemon viminalis</i> (Weeping Bottle Brush)	To be removed
T19	<i>Callistemon viminalis</i> (Weeping Bottle Brush)	To be removed
T20	<i>Callistemon viminalis</i> (Weeping Bottle Brush)	To be removed
T21	<i>Callistemon viminalis</i> (Weeping Bottle Brush)	To be removed
T22	<i>Callistemon viminalis</i> (Weeping Bottle Brush)	To be removed
T23	<i>Callistemon viminalis</i> (Weeping Bottle Brush)	To be removed
T24	<i>Lophostemon confertus</i> (Brushbox)	To be retained and protected
T25	<i>Eucalyptus saligna</i> (Sydney Blue Gum)	To be retained and protected
T26	<i>Lophostemon confertus</i> (Brushbox)	To be retained and protected

REFER TO A DETAILED ARBORIST ASSESSMENT PREPARED BY
ALEX AUSTIN ARBORIST 09.2021

TREE PROTECTION ZONE REQUIREMENTS

The TPF shall be installed as far from trunk as possible and beyond the TPZ where space allows. Tree protection zone (TPZ) must be established to protect the select trees during construction. The tree protection fence shall be a minimum 1.8 m high permanent metal mesh fence with posts secured into ground. TPF must be installed prior to any demolition, clearing, grading or construction work and remain in place in functioning condition until construction is complete. Signage must be installed stating NO ENTRY - TREE PROTECTION ZONE in accordance with AS 1319.

There must be no storage of materials or machinery in the area of the TPZ. No alteration in soil levels or excavations undertaken, no location of services or stockpiling of soil or rubble. No structures should be attached to the tree. Any trenching - if necessary, shall be done manually with the minimal disturbance to the tree; Any works required within this zone shall be under the direction of, and to the satisfaction of, a suitably qualified AQF Level 5 Arborist.

Woodchip mulch must be installed to a depth of 75mm within the fenced off protection area. Permanent irrigation lines shall be installed for continuous watering during hot summer weather. A suitably qualified AQF Level 5 Arborist must monitor the tree and provide advice on any necessary after care, if required.

In areas where fence can not be installed trunk protection and ground protection should be installed prior to the commencement of works and remain in place until after construction works have been completed.

Tree Trunk Protection

Protection not to be removed until all construction works
completed.

Around the base of this tree there is to be

NO

Storage of materials
Trenching or excavation
Washing of tools or equipment

Tree Protection Zone

Fence not to be removed without approval from Arborist

Within this fence there is to be

NO

Storage of materials
Trenching or excavation
Washing of tools or equipment

ADOPTED FROM ARBORIST REPORT PREPARED BY MOORE TREES ARBORICULTURAL SERVICES

DRAWING NO

ISSUE

DATE

ARCHITECT

CLIENT

LANDSCAPE ARCHITECT

CHRIST CHURCH ANGLICAN BEXLEY

1A-C DUNMORE ST N, 38 ALBYN ST BEXLEY, NSW

TREE PROTECTION PLAN

SK 02

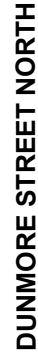
K

MAR 2023

plus
architecture

SUSTAINABLE DESIGN
GROUP LTD

Umbaco
LANDSCAPE ARCHITECTS
T 02 9955 6772
20/1 Brady Ave, Kirribilli NSW 2061
www.umbaco.com.au



0 0.5 2.5m 5m 10m



MINISTRY COMMUNAL AREA



Seating with backrest set on concrete pavement



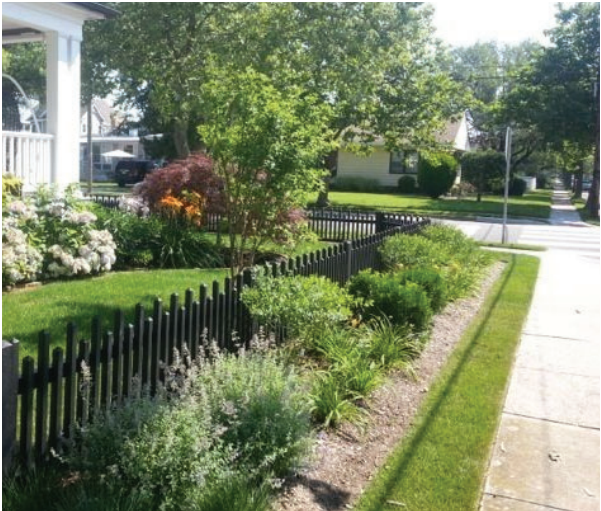
Accessible picnic setting to complement play area



Bike racks set alongside church



Aluminium slat fence set in garden bed



Hedges will soften street in front of the new fence. these will include Lily Pily hedges and combination of Lavender, Westringia and Honey Myrtle

MEDIUM CANOPY TREES PROPOSED TO DUNMORE STREET FRONTAGE



Tristaniopsis laurina 'Luscious' will replace 2 existing Leyland cypresses



Crape Myrtle, a small deciduous tree to front wall of Church



Callistemon viminalis as additional tree to carpark



Waterhousia floribunda to childcare boundary fence

LARGE CANOPY TREES PROPOSED TO CARPARK



Corymbia eximia
Yellow Bloodwood

LARGE SHADE TREE TO COMMUNAL AREA

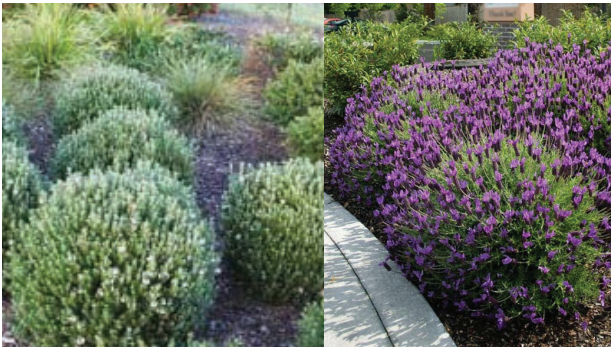


Angophora floribunda
Rough Barked Apple

COLORFUL NATIVE AND FEATURE SHRUBS WILL BE PLANTED THROUGHOUT CHURCH GARDENS



Rosemary hedge



Correa & lavender



Combination of Westringia and Dwarf Bottle Brush

CHILDCARE OUTDOOR PLAY



Sandpit with sandstone log edge and shade structure over



Timber deck will provide alternative surface and allow for role play and a small stage



Palms are safe for child play



Fragrant and textural plants such as Geranium and Tulbagia



Mud kitchen



Tiny seating area



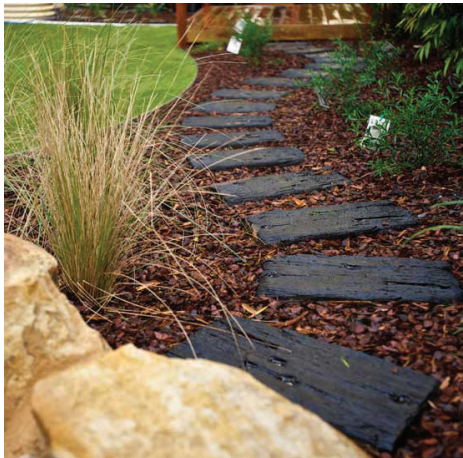
Tree trunks edge or seats



SENSORY PLANTING



Stepping stones or little seats



Children will enjoy stepping into garden



and trailing through planing



Exploring is valuable play time



Native plants will attract birds and will provide textural interest

TREES TO CHILDCARE AREA



Banksia integrifolia



Angophora floribunda



Hibiscus tiliaceus



Melaleuca linariifolia



Backhousia citriodora sp.

SHRUBS / GROUNDCOVERS / CLIMBERS TO CHILDCARE AREA



Syzygium australe 'Select Form'



Banksia spinulosa 'Birthday Candles'



Acacia cognata 'Limelight'



Pelargonium peltatum



Westringia sp.



Leucadendron stelligerum 'Harvest'



Lavandula angustifolia



Viola hederacea

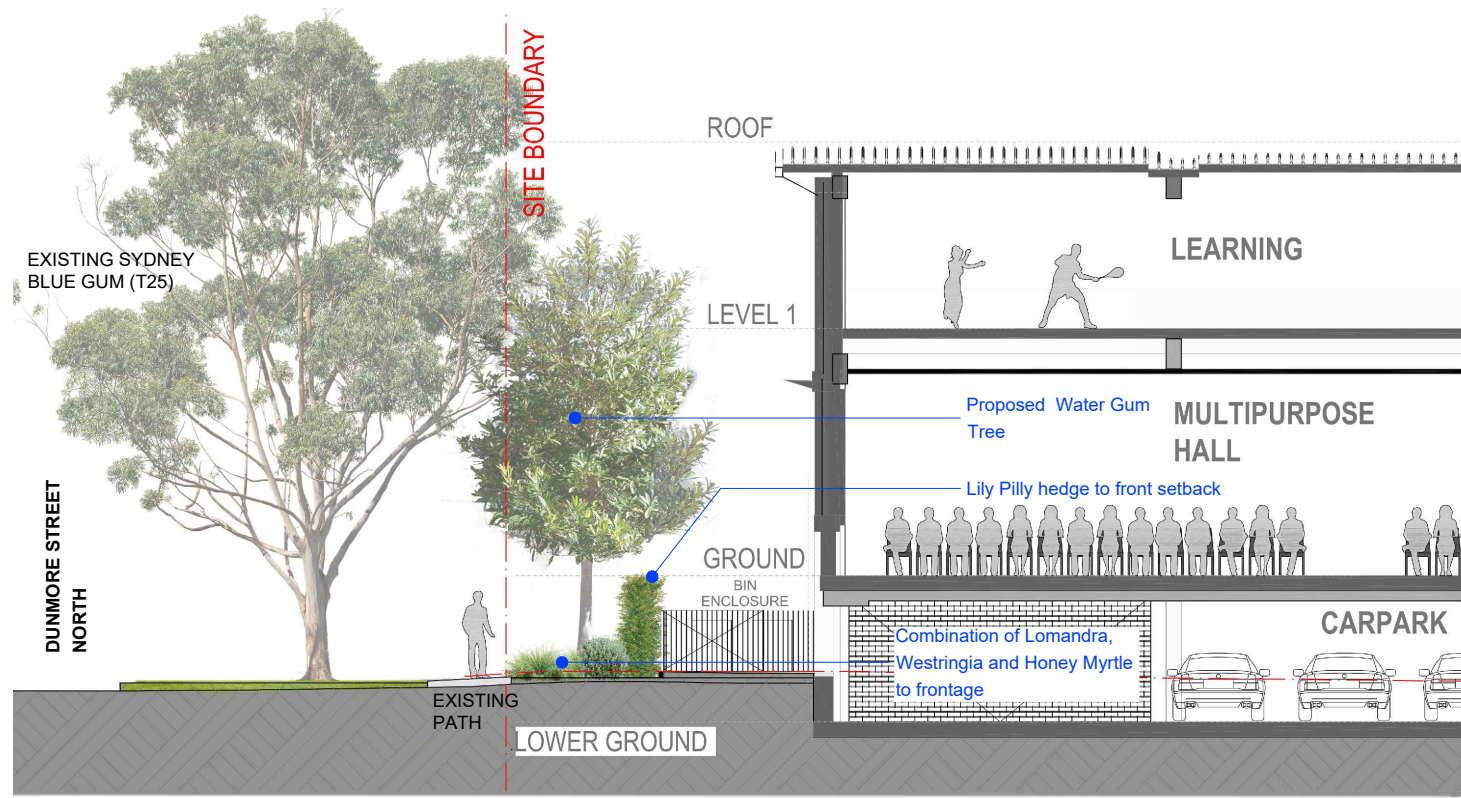


Brachyscome multifida 'Mauve'

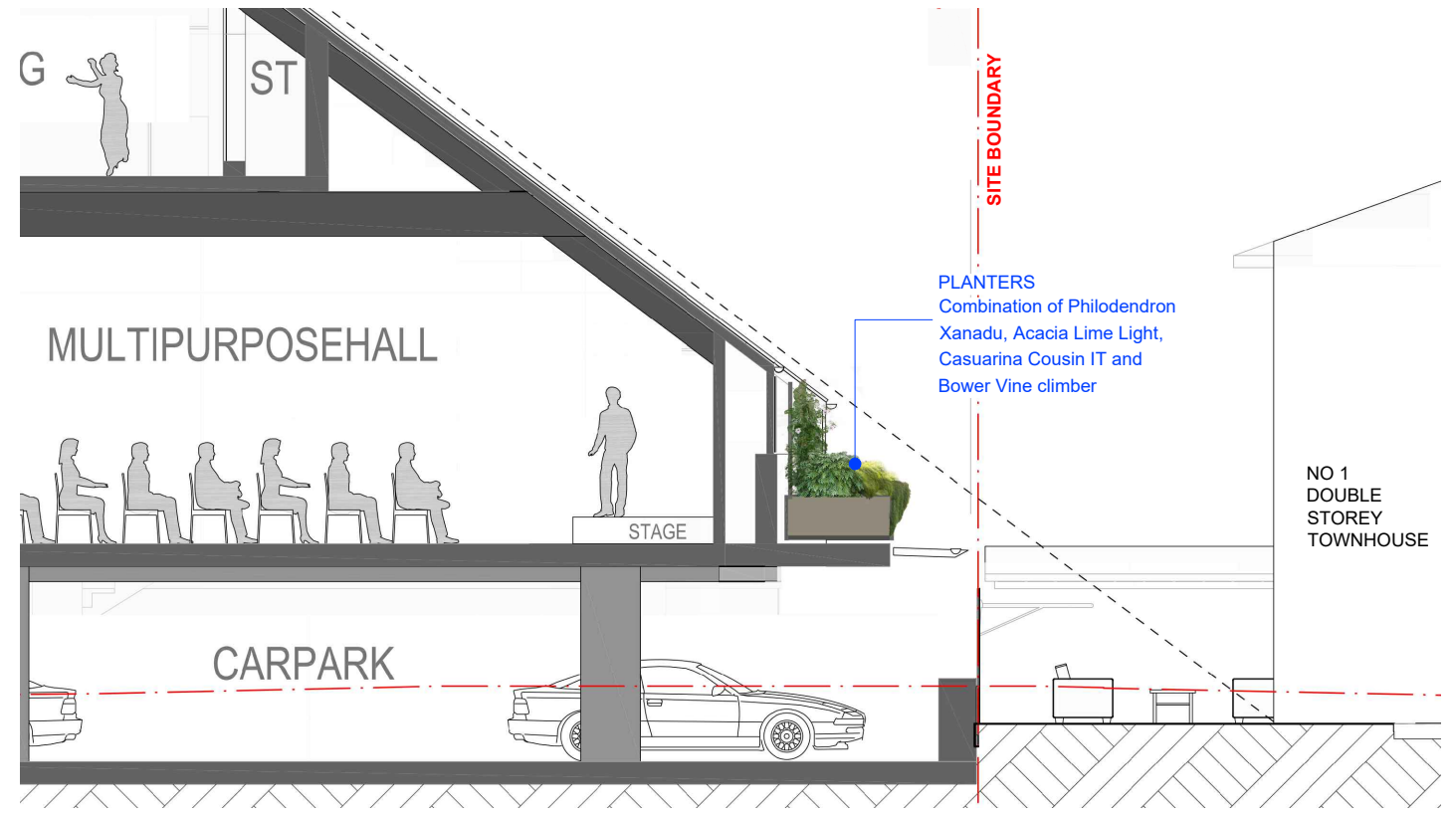


Pandorea pandorana

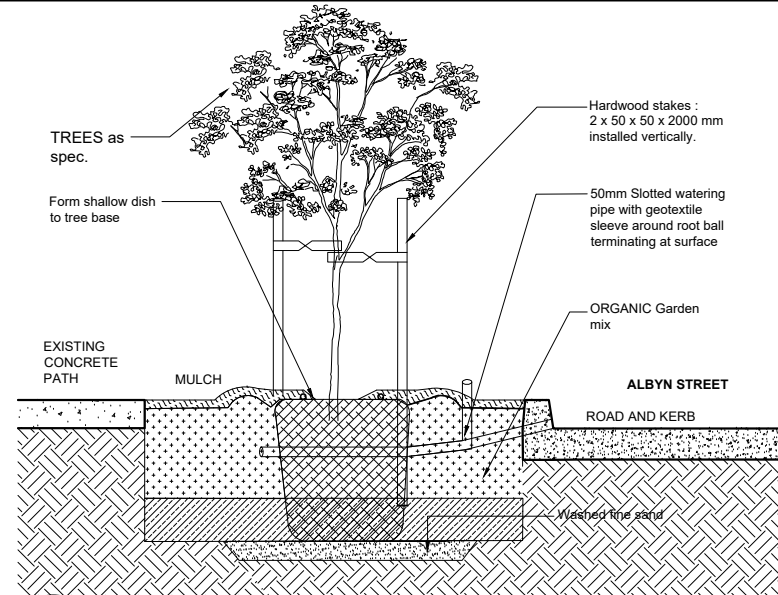
	Botanical Name	Common Name	Size	Height at planting
	STREET TREES up to 7 m height			
MB	Melaleuca bracteata 'Revolution Green'	Black Tea-Tree Revolution Green	150 L	2 m
	LARGE / MEDIUM CANOPY TREES up to 20 m height			
AF	Angophora floribunda	Rough Barked Apple	150 L	2.5 m
CE	Corymbia eximia	Yellow Bloodwood	45 L	1.2 m
CG	Corymbia gummifera	Red Bloodwood	150 L	2.5 m
BI	Banksia integrifolia	Coast Banksia	100 L	2 m
TL	Tristaniopsis laurina 'Luscious'	Water Gum	500 L	4 m
TL 500	Tristaniopsis laurina 'Luscious'	Water Gum	100 L	2 m
WF	Waterhousia floribunda	Weeping Lilipilly	100 L	2 m
	FEATURE TREES SMALL up to 12 m height			
AH	Angophora hispida	Dwarf Apple	25 L	1.2 m
BC	Backhousia citriodora	Lemon scented Myrtle	25 L	1.2 m
BS	Banksia serrata	Old Man Banksia	25 L	1 m
CC	Callistemon citrinus	Crimson Bottlebrush	25 L	1 m
CV	Callistemon viminalis	Wheeping Bottle Brush	45 L	1.2 m
HT	Hibiscus tiliaceus	Cottonwood Hibiscus	75 L	1.5 m
LI	Lagerstroemia indica x fauriei 'Sioux'	Crape Myrtle (Hot Musk Pink)	45 L	1 m
ML	Melaleuca linariifolia	Snow-In-Summer	25 L	1 m
PN	Pyrus nivalis	Snow Pear	75 L	1.8m
	ORNAMENTAL SHRUBS / FEATURE PLANTS up to 3 m height			
	Correa alba	White Correa	200 mm	0.3 m
	Correa reflexa	Common Correa	200 mm	0.3 m
	Doryanthes excelsa	Gymea Lily	300 mm	0.5 m
	Goodenia ovata	Hop Goodenia	200 mm	0.3 m
	Grevillea rosmarinifolia 'Crimson Villea'	Grevillea	200 mm	0.3 m
	Lavandula angustifolia	English Lavender	200 mm	0.2 m
	Leucadendron stelligerum 'Harvest'	Harvest Leucadendron	200 mm	0.3 m
	Callistemon citrinus 'White Anzac'	White Anzac Callistemon	200 mm	0.4 m
	Callistemon 'Little John'	Dwarf Bottlebrush	200 mm	0.4m
	Melaleuca thymifolia 'Purple Lace'	Honey Myrtle	250 mm	0.3 m
	Ozothamnus diosmifolius	Rice Flower	200 mm	0.3 m
	Philodendron 'Xanadu'	Dwarf Philodendron	200mm	0.3 m
	Rosmarinus officinalis 'Tuscan Blue'	Rosemary Tuscan Blue	200 mm	0.3 m
	Syzygium australe 'Select Form'	Lily Pilly Select Form	300 mm	0.6 m
	Westringia fruticosa 'Grey Box' / 'Mundi'	Dwarf Coastal Rosemary	200 mm	0.3 m
	GROUNDCOVERS / GRASSES / NATIVE GRASSES			
	Acacia cognata 'Limelight'	Acacia Limelight	140 mm	0.2 m
	Banksia spinulosa 'Birthday Candles'	Birthday Candles	140 mm	0.15 m
	Brachyscome multifida 'Mauve'	Mauve Rocky Daisy	140 mm	0.15 m
	Carpobrotus glaucescens	Pigface	140 mm	0.15 m
	Casuarina glauca 'Cousin It'	Cousin It She Oak	200mm	0.15 m
	Dianella caerulea	Blue Flax Lily	140 mm	0.2 m
	Dianella revoluta	Blue Flax Lily 'Tas Red'	140 mm	0.2 m
	Hardenburgia violacea 'Meema'	Hardenburgia Meema	140 mm	0.2 m
	Hibbertia scandens	Snake Vine	140 mm	0.15 m
	Kennedia rubicunda	Dusky Coral Pea	140 mm	0.15 m
	Lomandra confertifolia 'Pallida'	Lime Turf	140 mm	0.3 m
	Lomandra longifolia 'Tanika'	Dwarf Lomandra	140 mm	0.3 m
	Pandorea jasminoides	Bower Vine	140 mm	0.15 m
	Pandorea pandorana	Wonga Wonga Vine	140 mm	0.15 m
	Pelargonium peltatum	Ivy-Leaved Pelargonium	140 mm	0.2 m
	Pimelea humilis	Common Rice Flower	140 mm	0.2 m
	Rosmarinus officinalis 'Prostrate'	Prostrate Rosemary	140 mm	0.15 m
	Scaevola sp.	Fan Flower	140 mm	0.15 m
	Tulbaghia violacea 'Silver Lace'	Society Garlic 'Silver'	140mm	0.15 m
	Viola hederacea	Native Violet	140 mm	0.1 m



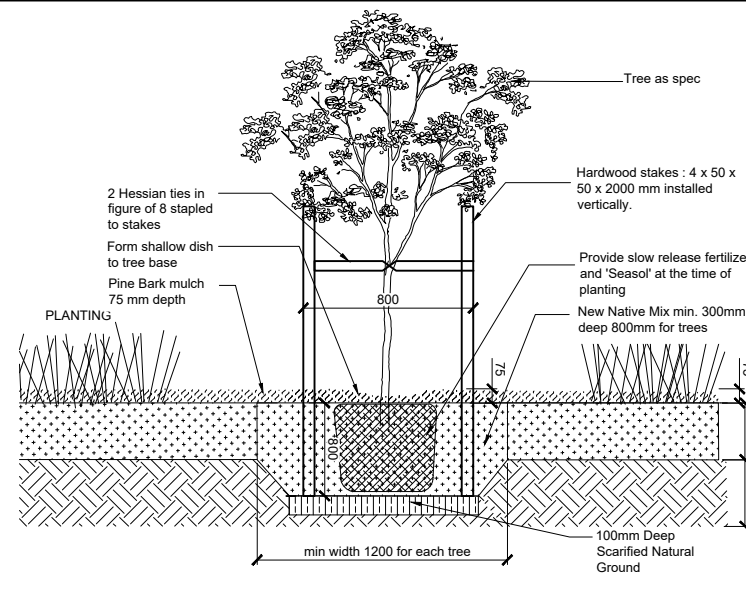
A-A DUNMORE ST N SECTION
SK01 Typical section Scale 1 : 75



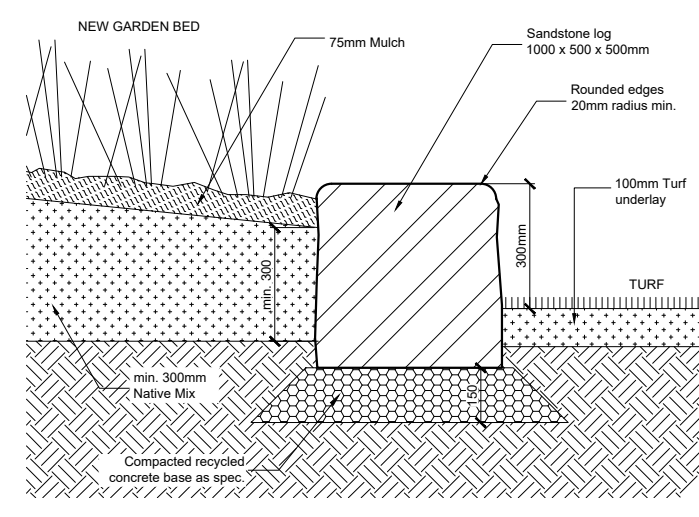
B-B PLANTER SECTION
SK01 Typical section Scale 1 : 50



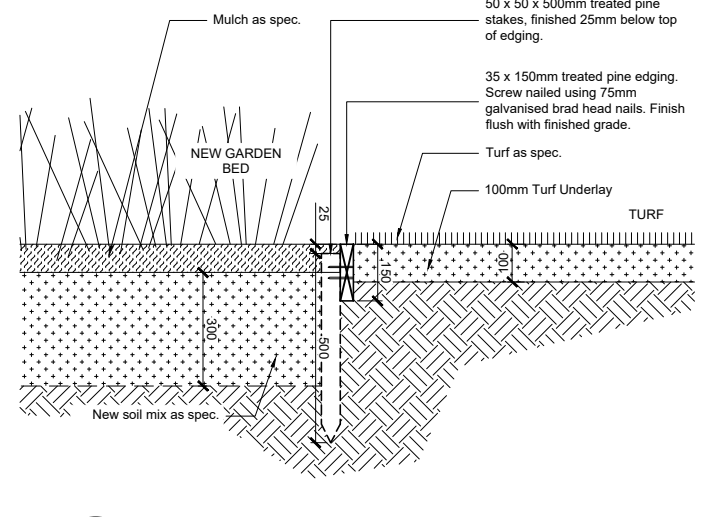
1 TYPICAL STREET TREE PLANTING
- Typical section Scale 1 : 20



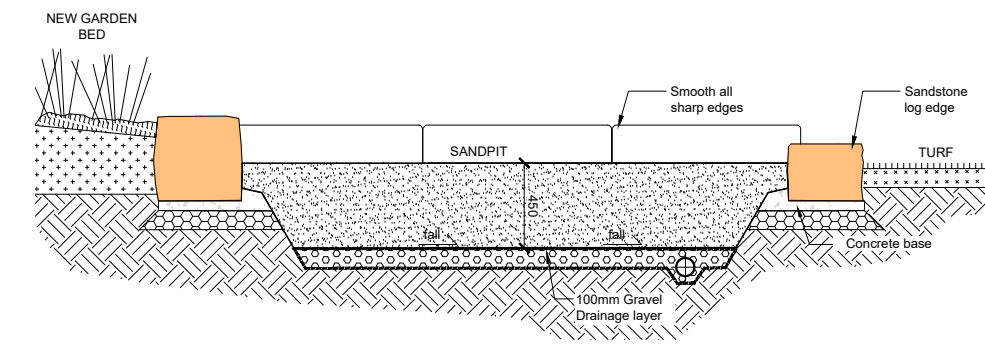
2 NEW TREE IN GARDEN BED
- Typical section Scale 1 : 20



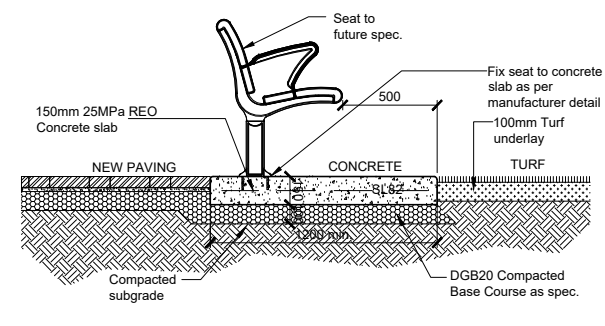
3 SANDSTONE LOG TYPICAL DETAIL
- Typical section Scale 1 : 10



4 TYPICAL TIMBER EDGE
- Typical section Scale 1 : 10



5 SANDPIT DETAIL (CHILDCARE OUTDOOR PLAY)
- Section Scale 1 : 20



6 SEAT ON CONCRETE SLAB (MINISTRY COMMUNAL AREA)
- Typical section Scale 1 : 20